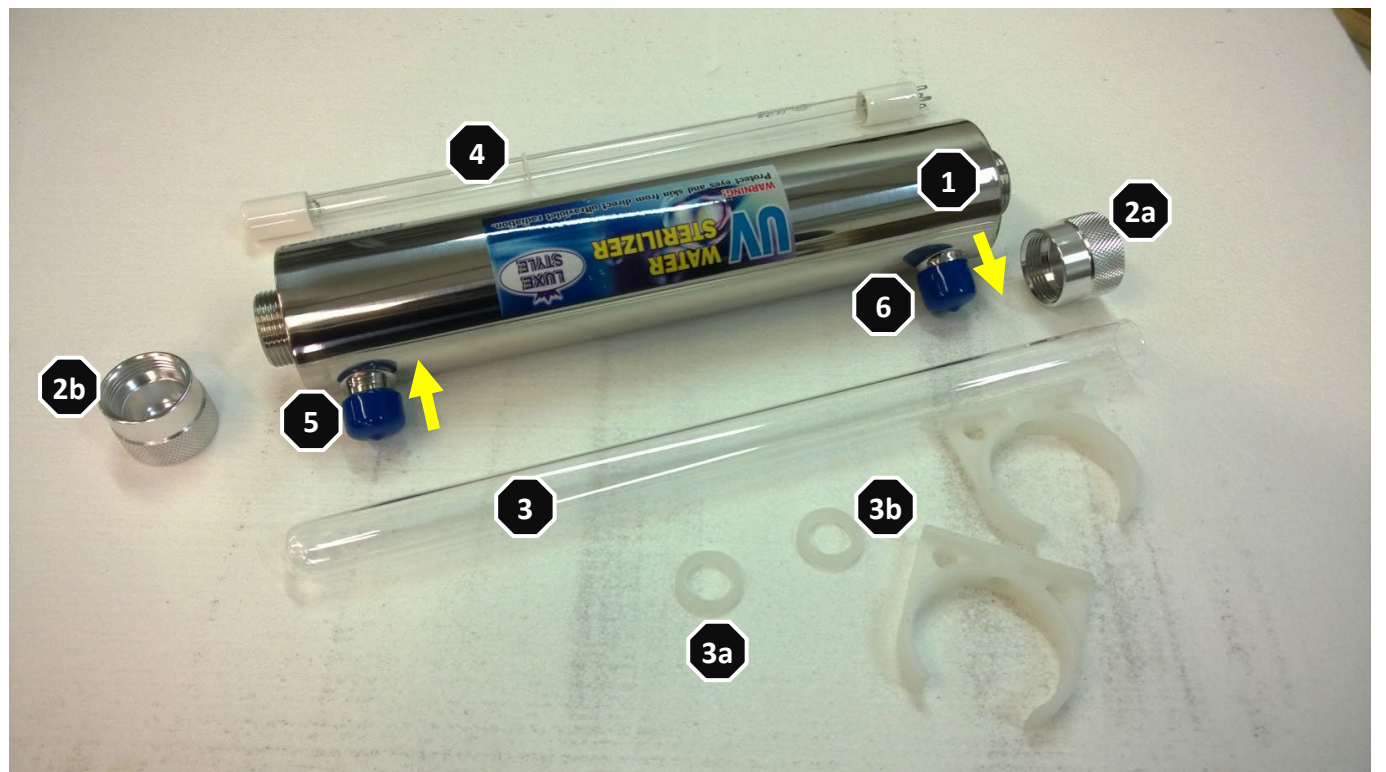


Guide for UV-C Cleaner

Construction & parts



1 UV-C unit

2a Top nut

2b Bottom nut

3 Protective glass

3a-3b Gasket for protective glass

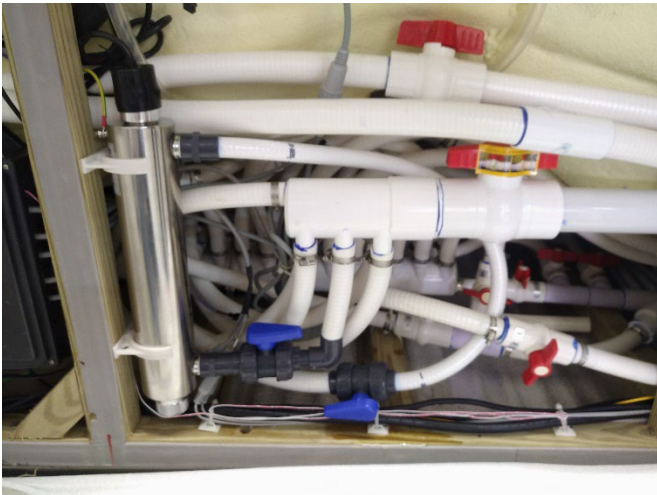
4 UV-C lamp 16 W

5 Inlet

6 Outlet

Service – replacing the lamp

Note! The procedure varies depending on how the product is installed, TopSpa and XS are shown in examples.

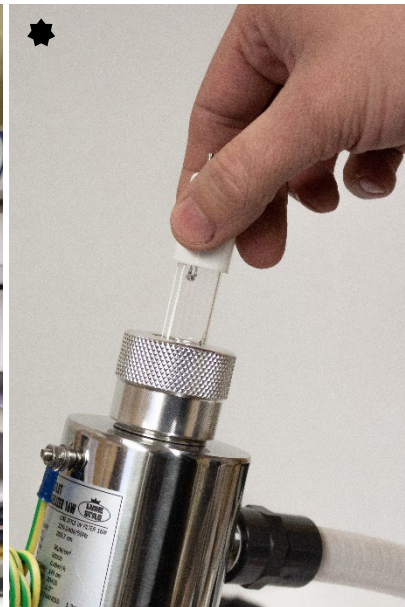


Localize the UV-C filter.

Close the valves to the UV-C filter.

The maximum life of the lamp is 9000 hours and even if it shines after that then it gives no UV-C effect. To change the lamp, remove the black connector, hold the lamp by the *white portion and lift it out.

Note: If the construction allows, the lamp can be lifted straight up.

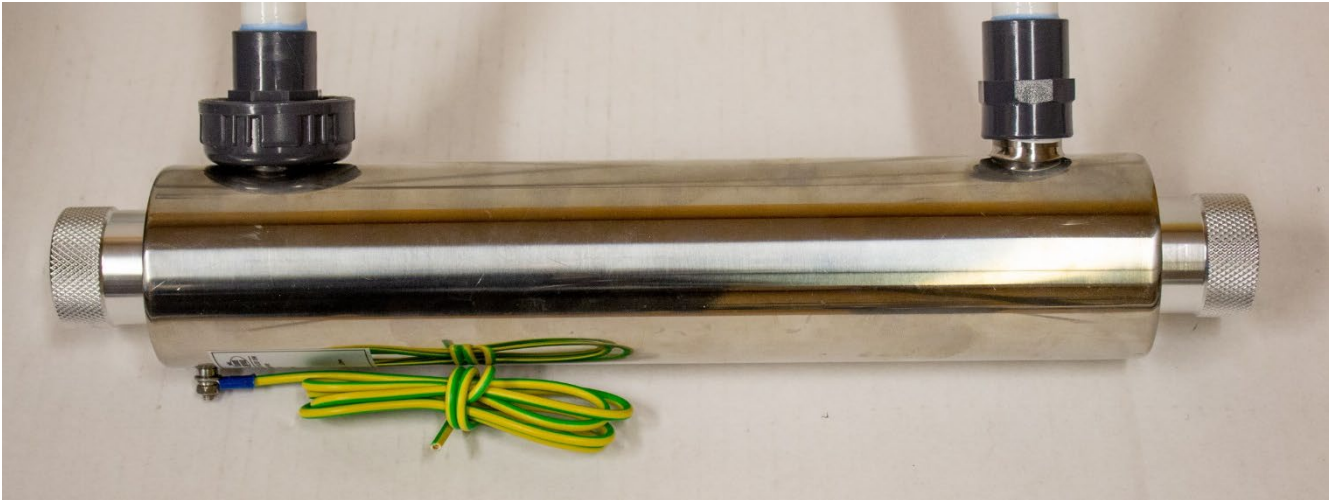


Remove the black plug and disconnect the lamp.

Replace with new lamp and reassemble in reverse order.

Cleaning of UV-C holder

Since the UV-C cleaner precipitates impurities, such as lime, it needs to be cleaned at least twice a year. Anything that gets stuck on the inside can otherwise cause the protective glass and lamp to crack.



1. Remove the lamp (4).
2. Position the UV-C cleaner so that the inlet (5) and outlet (6) face up.
3. Mix a tablespoon of citric acid in a liter of lukewarm water in a container.
1. Fill the cleaner with the solution via the inlet (5) or the outlet (6). A kitchen funnel helps reduce spillage.
4. Leave it to work, the solution is kept in the tube, approx. 2-4 hours.
5. Shake the UV-C cleaner a few times and then drain the solution. Check if it is clean.

A bottle brush may be needed to remove e.g. lime left on the wall.

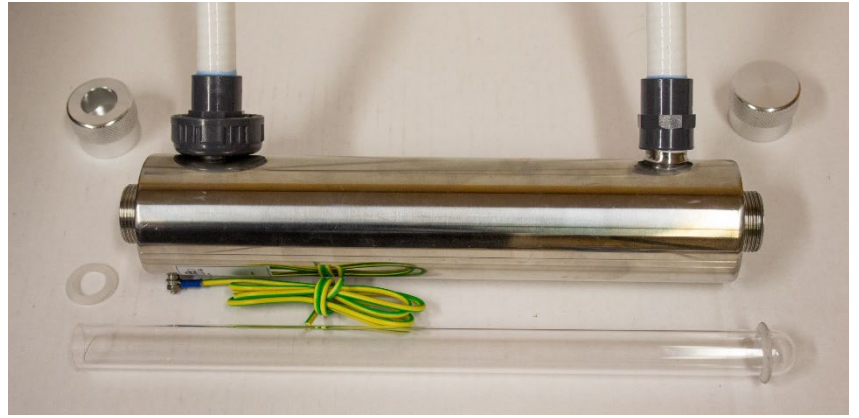
1. Unscrew both nuts (2a, 2b).



2. Remove the seal from the open end of the protective glass.

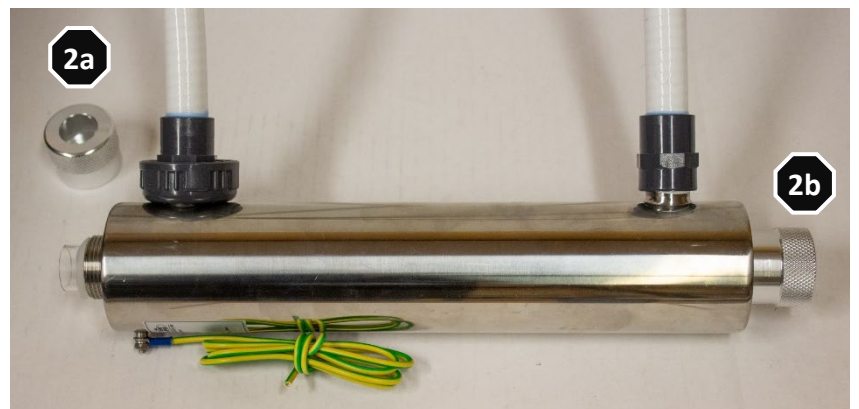


3. Remove the protective glass out through the other side.
4. Use the bottle brush to clean the inside.
5. Rinse and check if more cleaning is required.



Assembly

1. Insert the protective glass again with open end first.
2. Replace the gasket over the open end, the protective glass should stick out about 1cm
3. Tighten nut 2b, then 2a.



NOTE! Do not overtighten the screws as the protective glass cover may crack.

Hold the lamp until it is inserted all the way, do not release it as it can easily break.



WARNING!

If the cleaner is not used during the cold season, it must be removed and stored in a heated room to protect the lamp and UV-C unit from freezing.